



AT THE EDGE MOUNTAINEERING

"Your greatest failure is not to try"

CONTOURS

ANSWERS

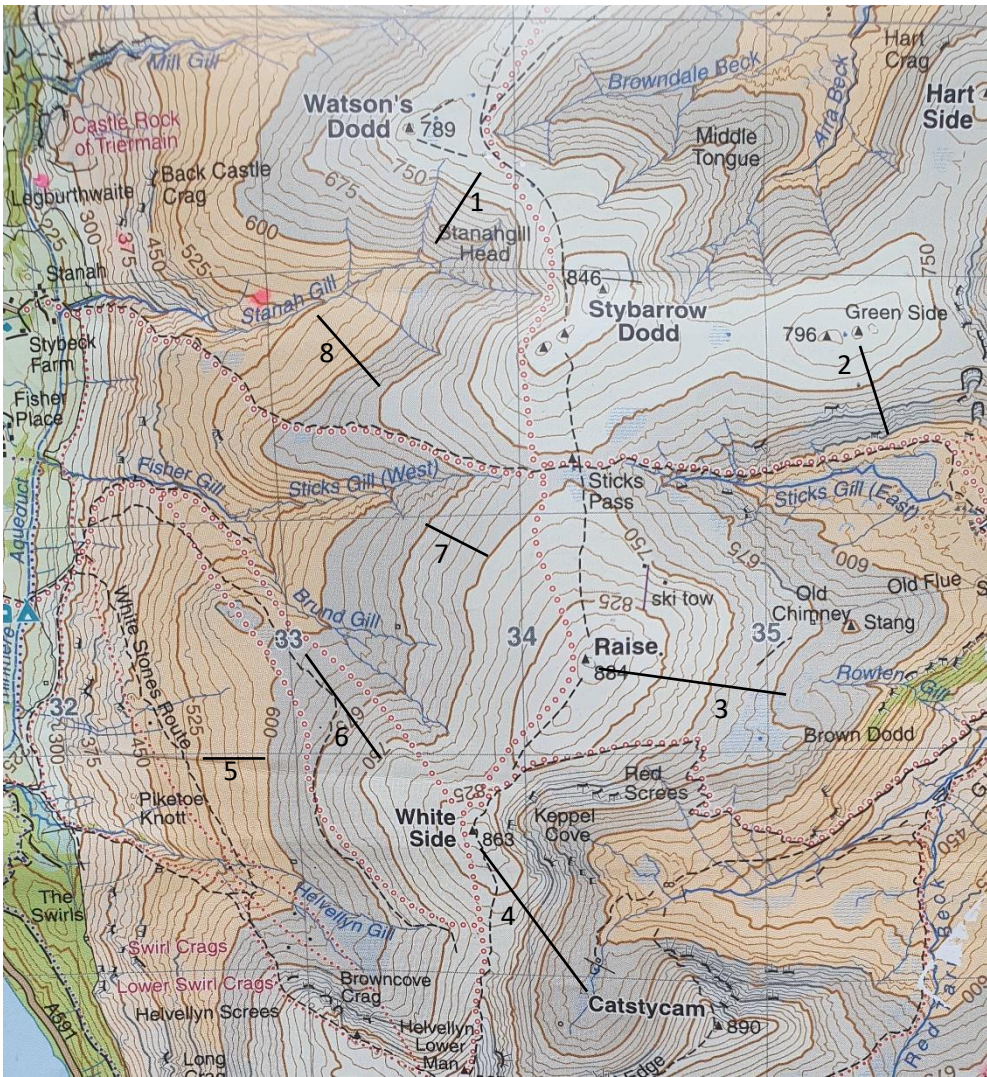
Here is the complete answer sheet for my **CONTOURS** series.

To put these skills into practice and to learn more, take a look at my [Navigation Courses](#) I offer.

All **confirmed bookings** will receive a **10% discount** code to use on [Harvey Maps](#) products from their site.

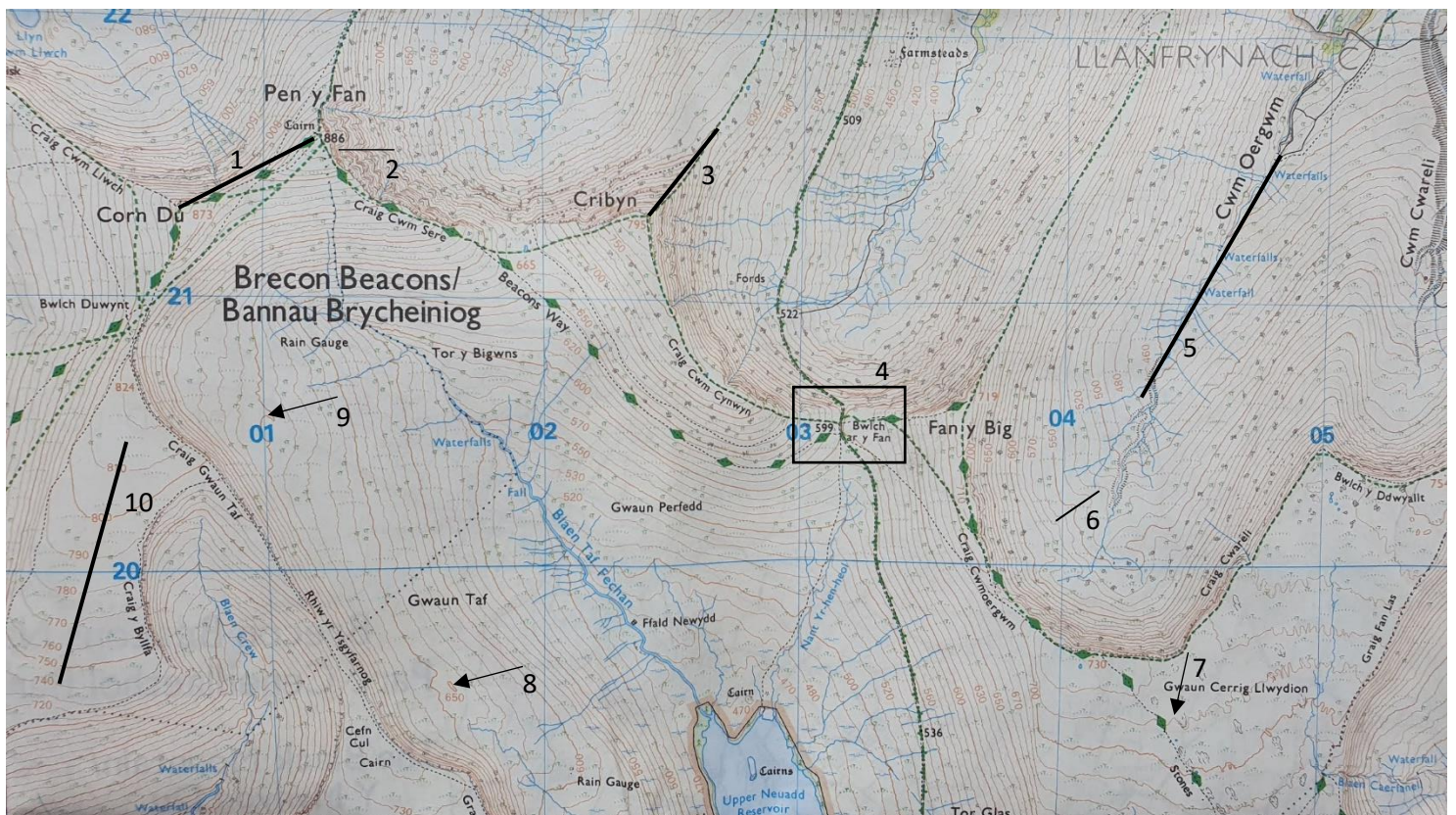


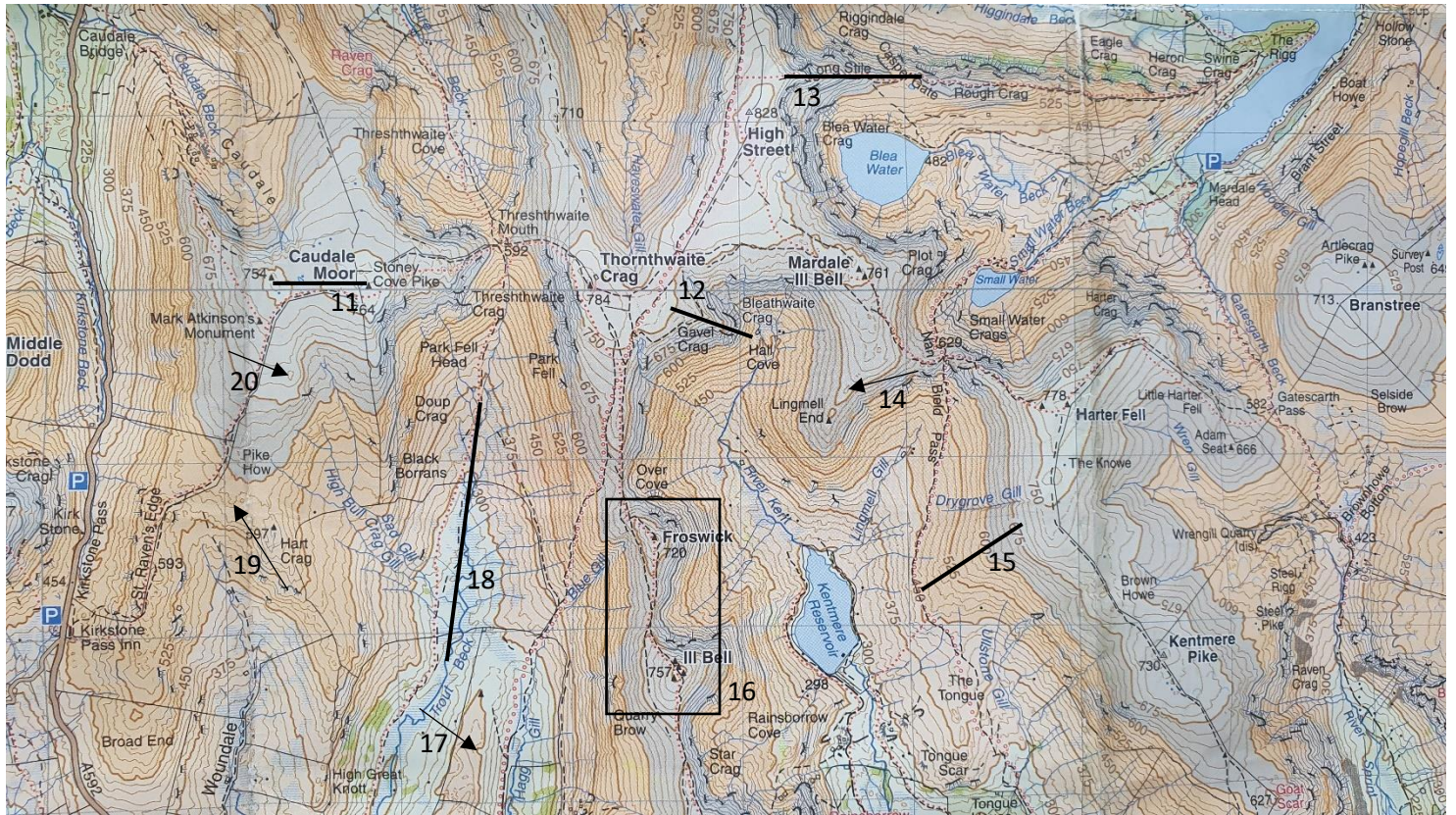
Q1: What type of slopes are marked with the lines? (use only the contour lines covered by the black lines)



1. Convex slope
2. Convex slope
3. Composite Slope
4. Composite slope
5. Uniform slope
6. Concave slope
7. Uniform slope
8. Concave slope

Q2: What are the contour features (Small and Major Landforms) marked with the lines, arrows and boxes?

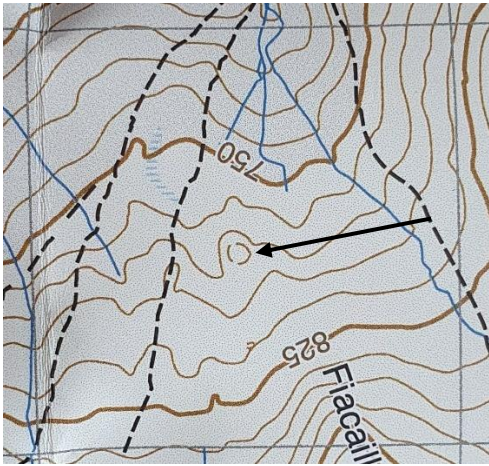




1. Saddle
2. Re-entrant
3. Ridge
4. Saddle or Col
5. Valley
6. Spur
7. Re-entrant
8. Knoll
9. Spur
10. Spur or shoulder

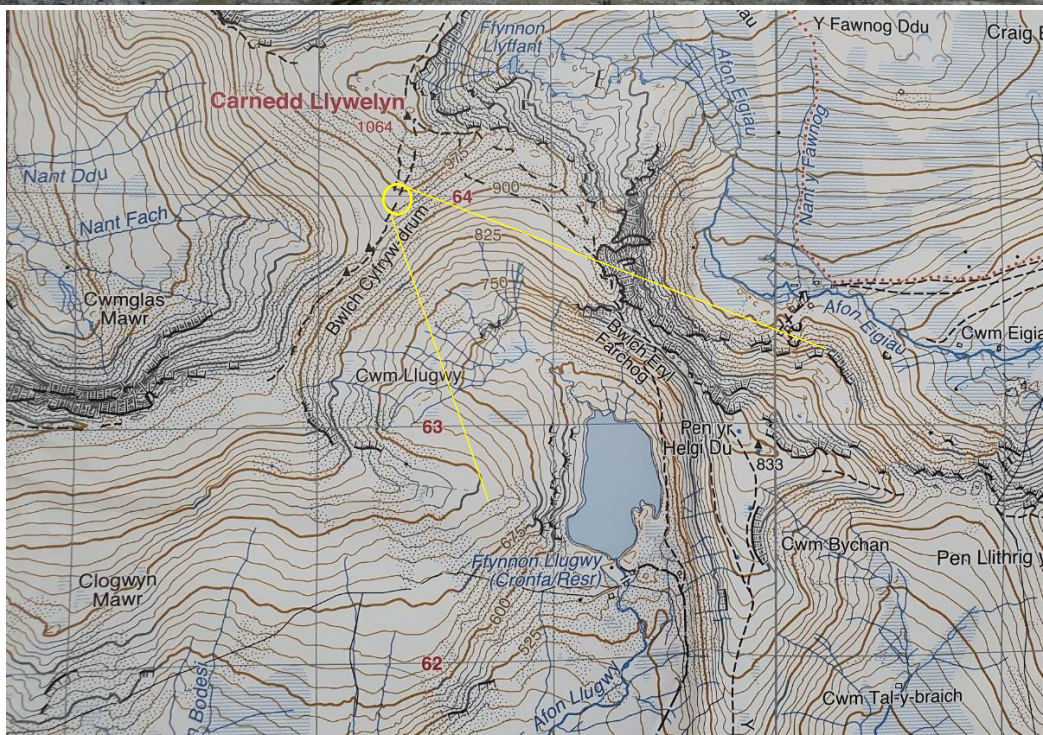
11. Saddle
12. Spur
13. Ridge
14. Knoll
15. Spur
16. Saddle
17. Re-entrant
18. Valley
19. Spur
20. Knoll

Q3: What type of contour line is this and what feature does it represent?



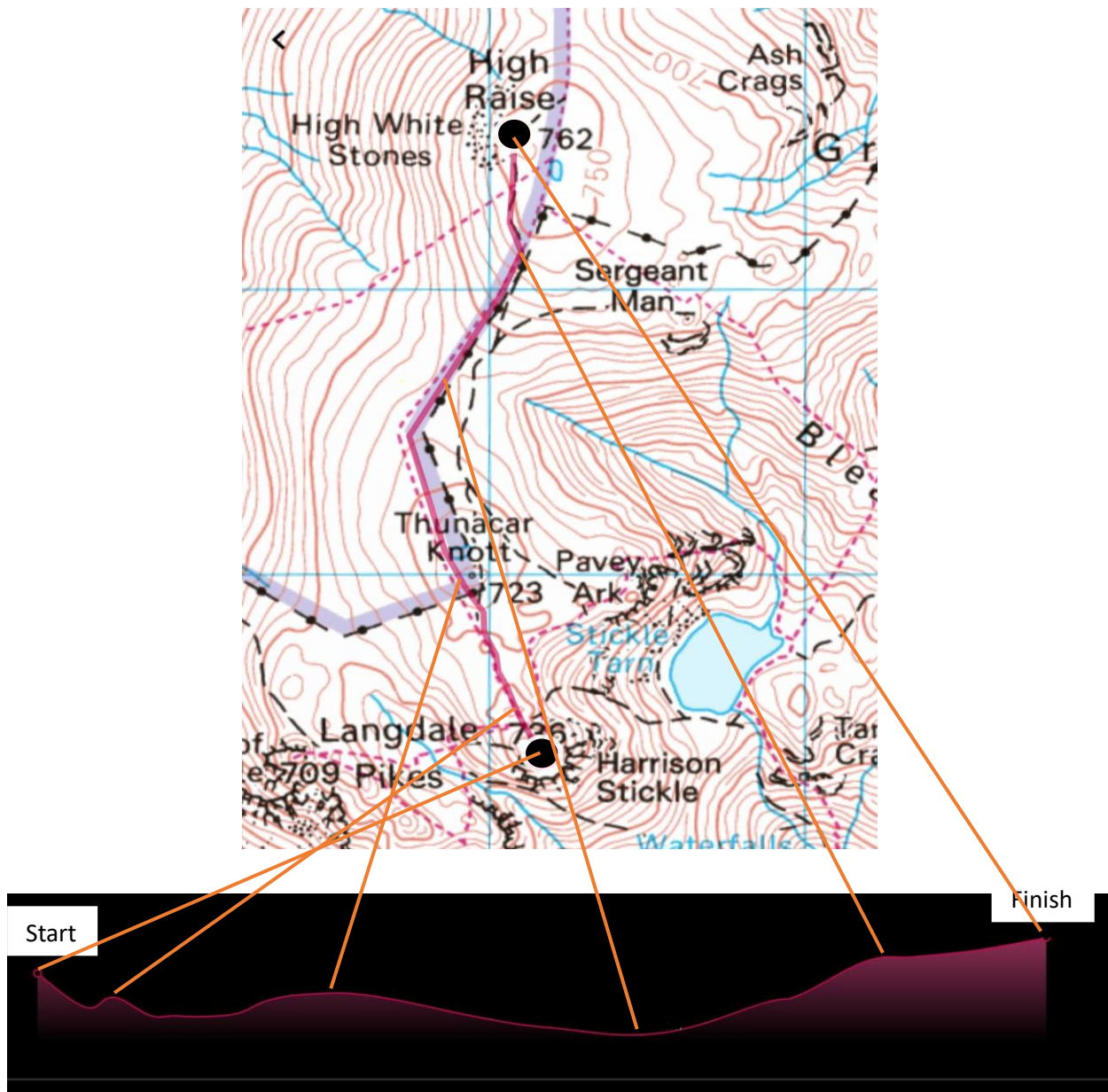
A: This is a form line or auxiliary contour line representing a knoll on a spur that does not break the next contour interval but is worth showing.

Q4: Take a look at this picture. Mark on the map below it where you think the picture was taken from.



Q5: I have plotted a walk on OS maps. Below is the map of the walk and the elevation profile. What direction did I do the walk in? (North to South or South to North).

A: South to North



This concludes the third series in my online navigation courses. I hope that you have found it helpful and inspired to learn more!

To put these skills into practice, take a look at my [Navigation Courses](#) I offer.

All successful bookings will also receive 10% off [Harvey Maps](#) products from their website

Let me know how you got on with this course and if you have any questions:

info@attheedgemountaineering.co.uk

See you At The Edge!