

Introduction to Maps - Questions:

Here is the complete list of **25 questions** to compliment my **Introduction to Maps** series. A blank answer sheet is attached. The complete answer list is attached to **Part 1** of my **Navigation Techniques** series. For these questions, you will need to download **MAP LEGENDS** for Harvey Maps and OS Maps. Links to these downloads can be found on my **NAVIGATION RESOURCES** page in **DOWNLOADS & RESOURCES** on my website.

1. The North of Dartmoor is a very featureless environment. If doing a multiday expedition from the North Moor to the South Moor, what scale or scales of map would you choose and why?
2. Look at the two maps below. Using your knowledge of map scales, what are the scales of these two maps? (*Images not to actual scale*)

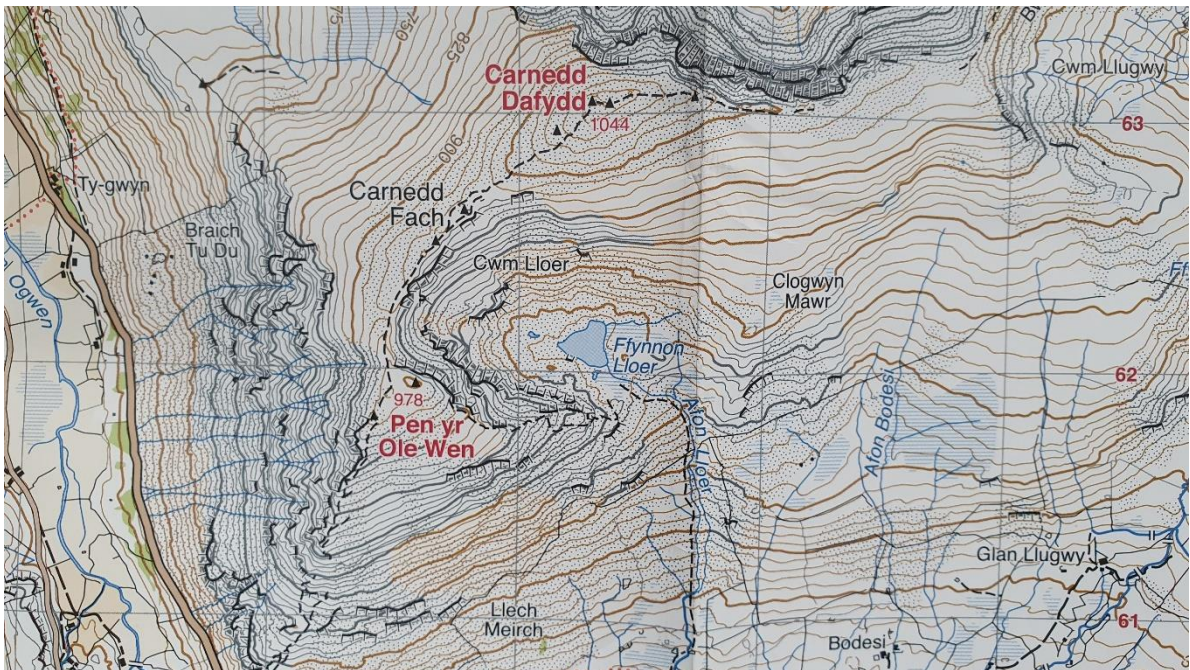


Image 1

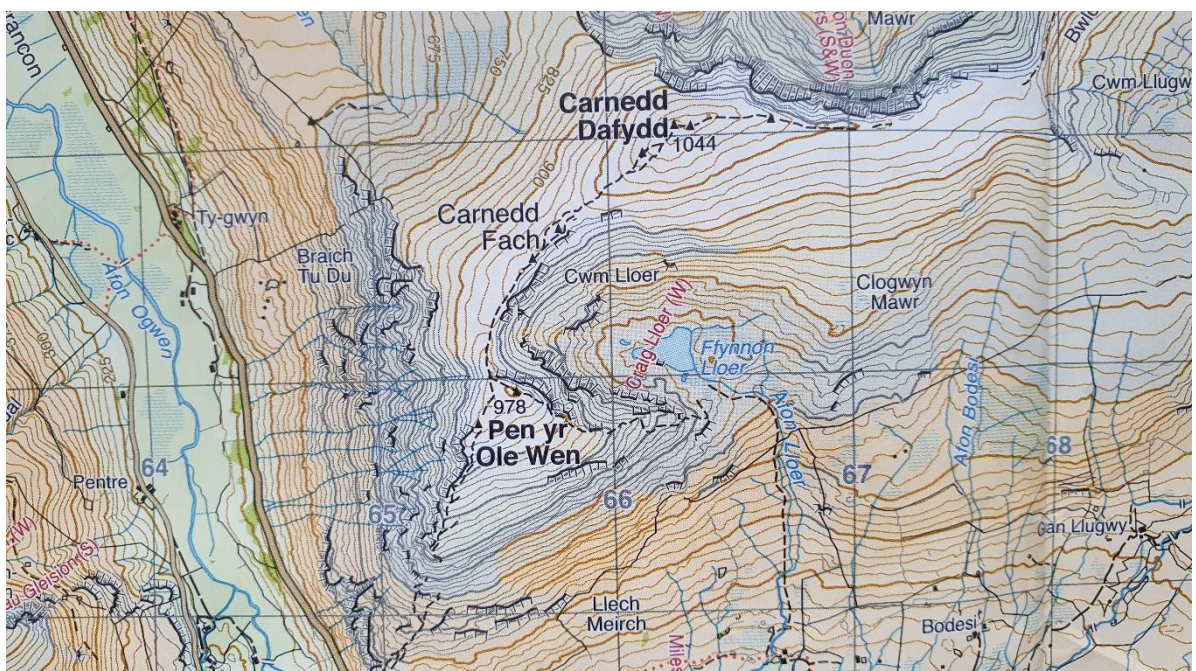


Image 2

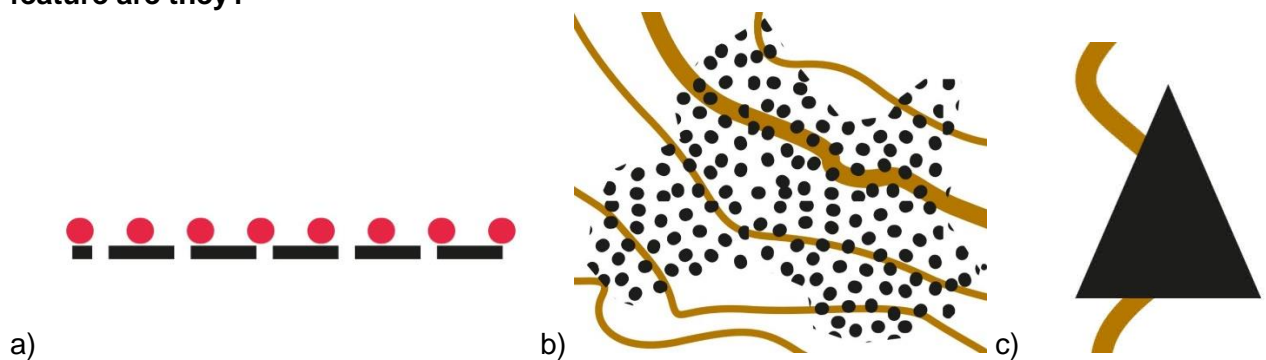
3. Using your knowledge of map scales, match the type of map to the correct scale:

- | | |
|---------------------------------|--------------|
| a) Road Map | 1. 1:40,000 |
| b) Orienteering Map | 2. 1:100 |
| c) Harvey British Mountain Map | 3. 1:1,250 |
| d) Ordnance Survey Explorer Map | 4. 1:250,000 |
| e) Town Map | 5. 1:25,000 |
| f) Floor Plan of your Home | 6. 1:10,000 |

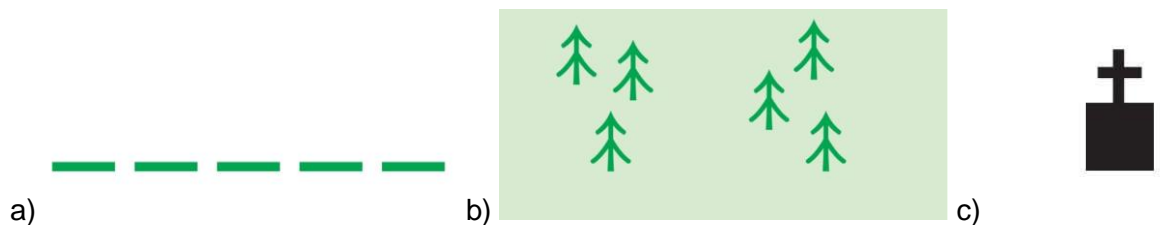
4. Name three difference between a 1:25,000 scale map and a 1:50,000:

5. A bit of home research now, what other scales of map do Harvey Maps produce?

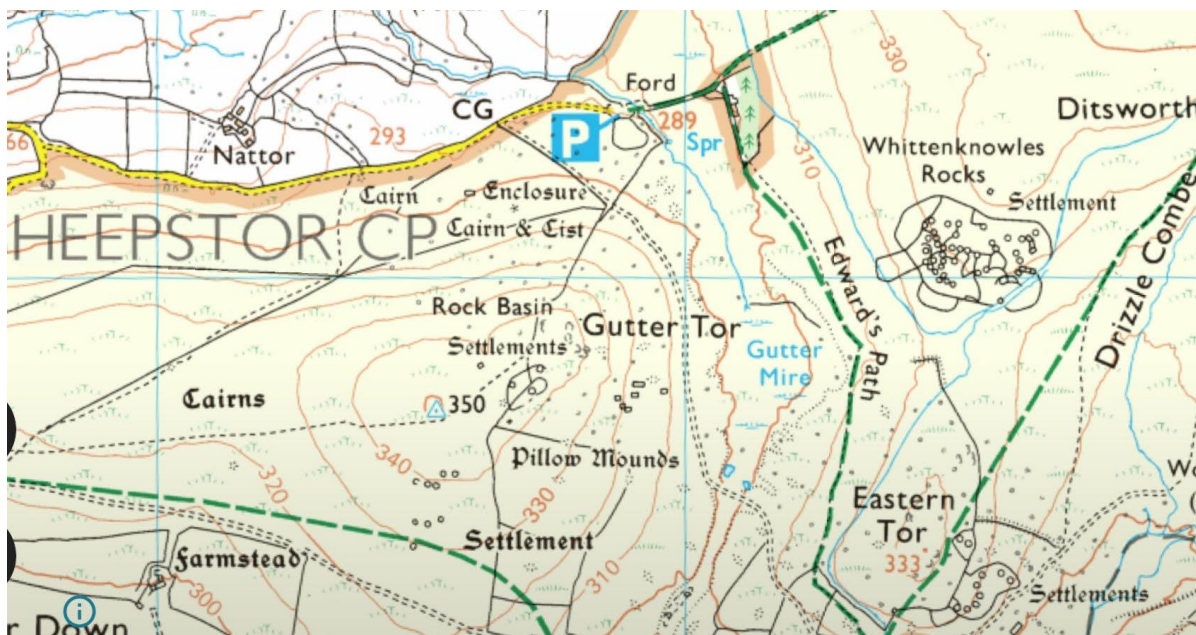
6. Using a Harvey Maps Superwalker Legend, what are these three symbols and what type of feature are they?



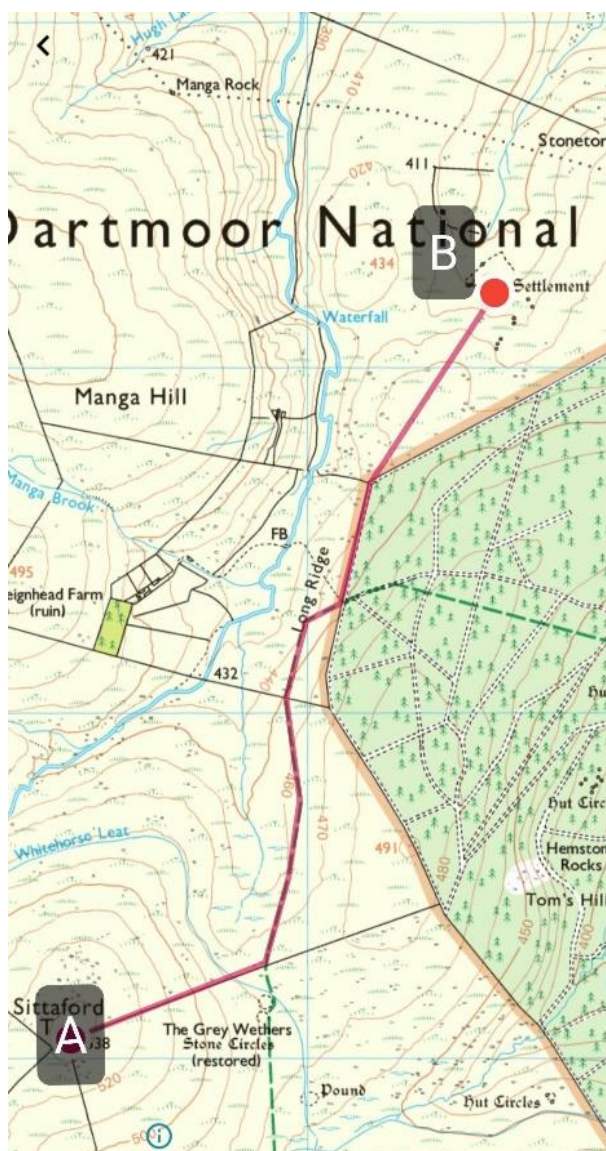
7. Using an OS Explorer Legend, what are these three symbols and what type of feature are they?



8. Looking at the map below and using a legend, what handrails can you see?

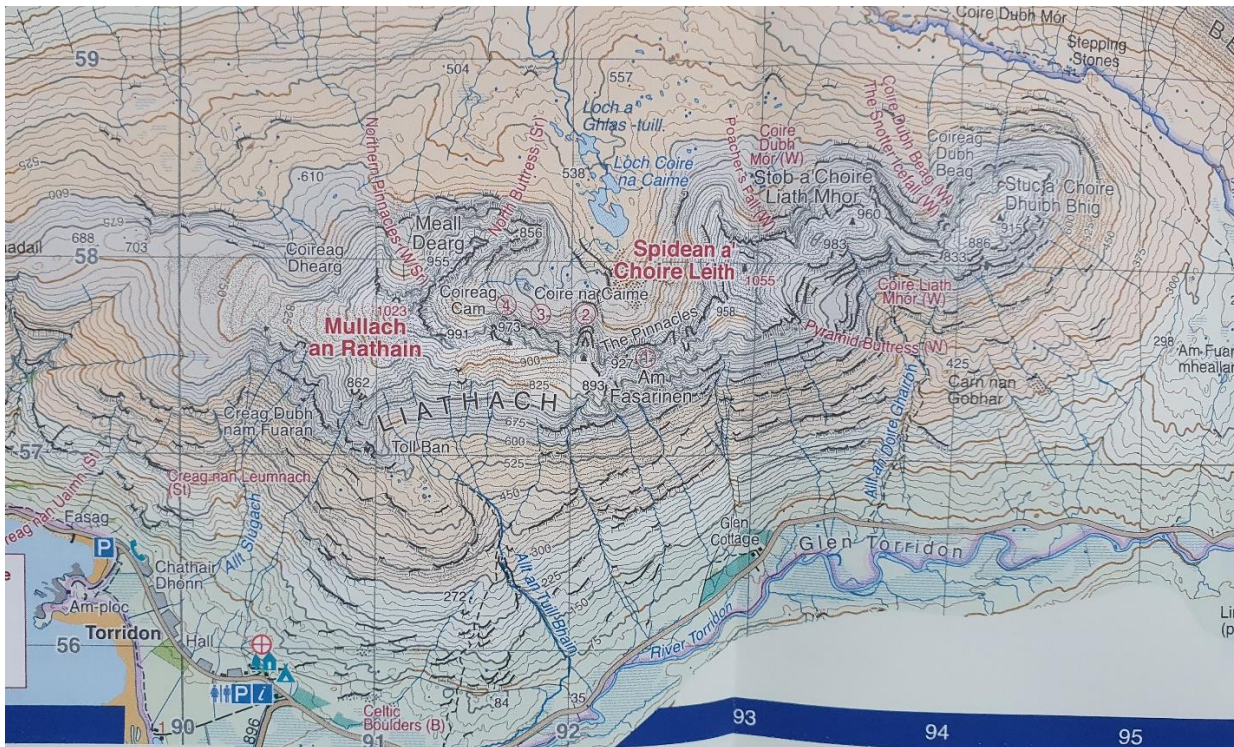


9. Look at the map below. From A, follow the marked route to B. What features would you use as collecting features?

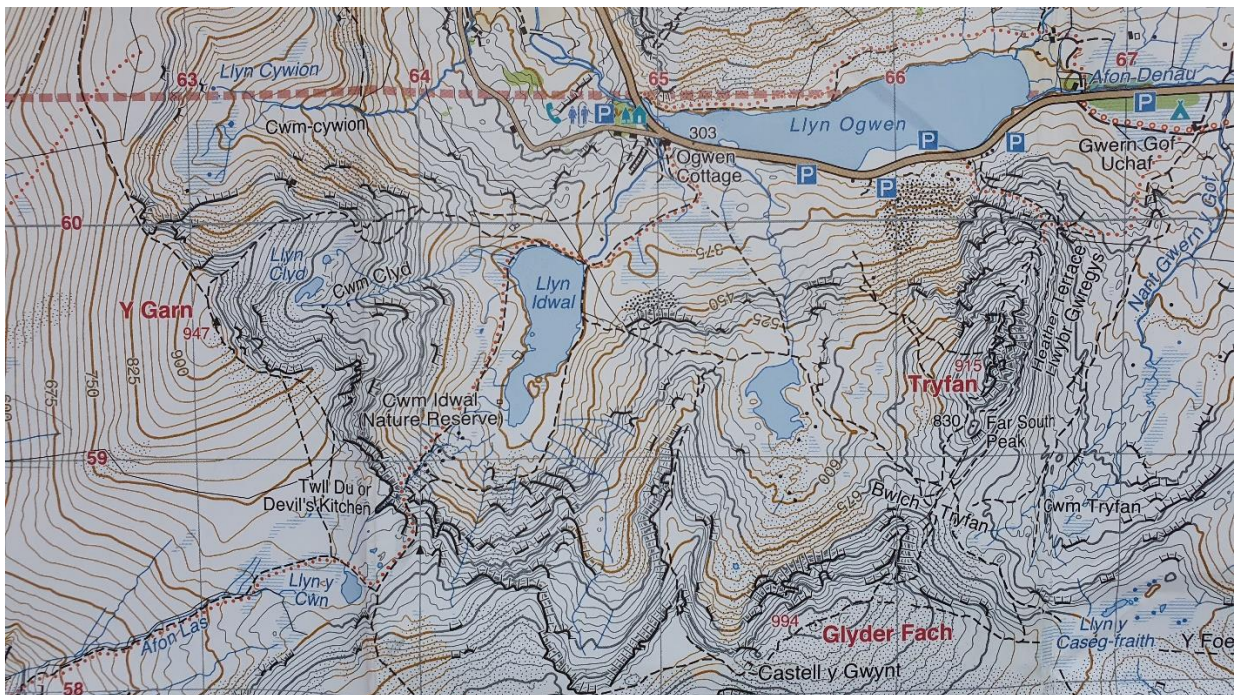


10. Using the same map above, what could you use as a catching feature if you overshoot B?

11. What is the 4-figure grid reference of the word LIATHACH in the map below?



12. What area feature is in grid square 64,59



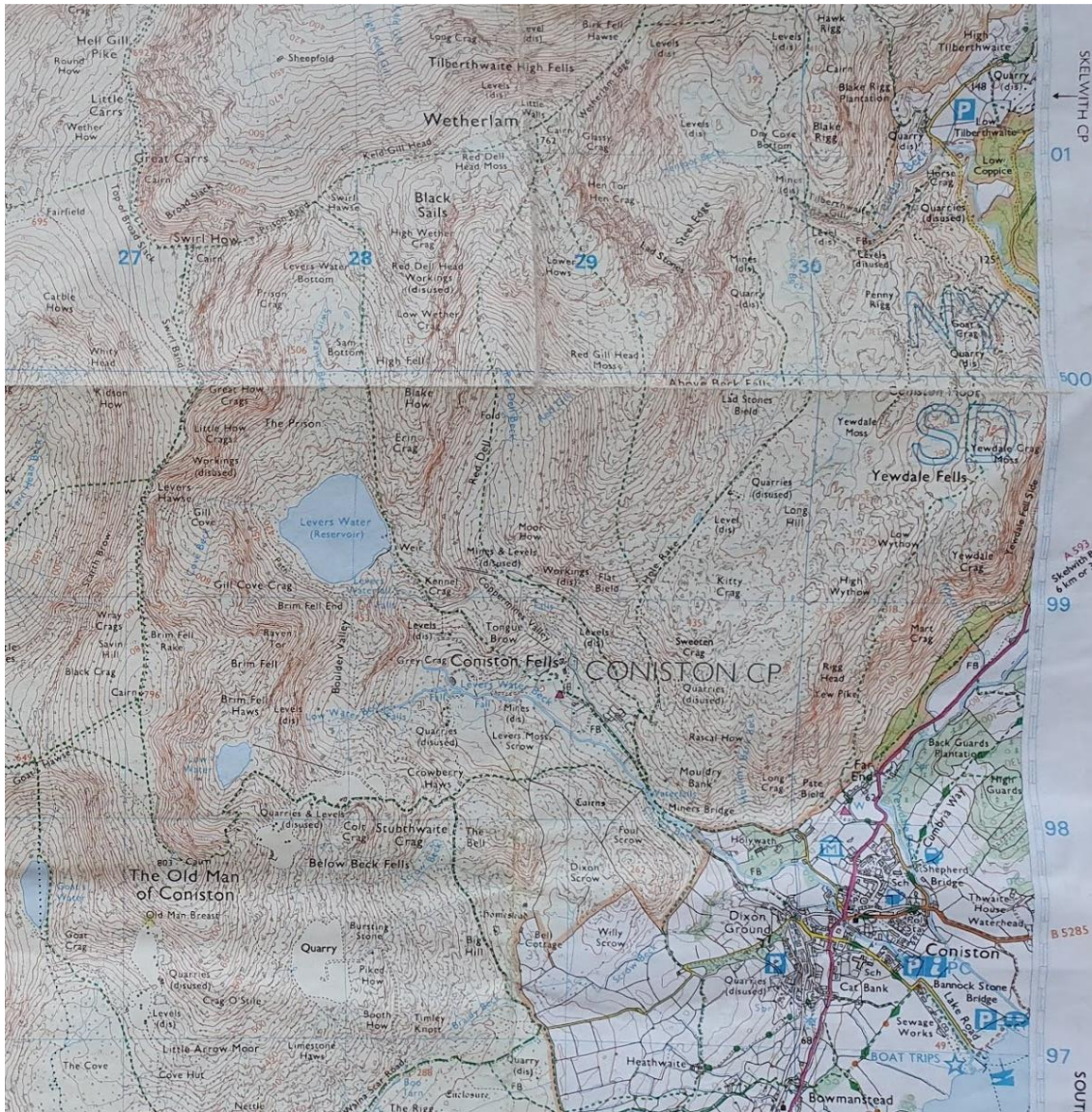
13. What is the 6-figure grid reference of LADYBROOK TOR? (Hint: Easting starts with 62)



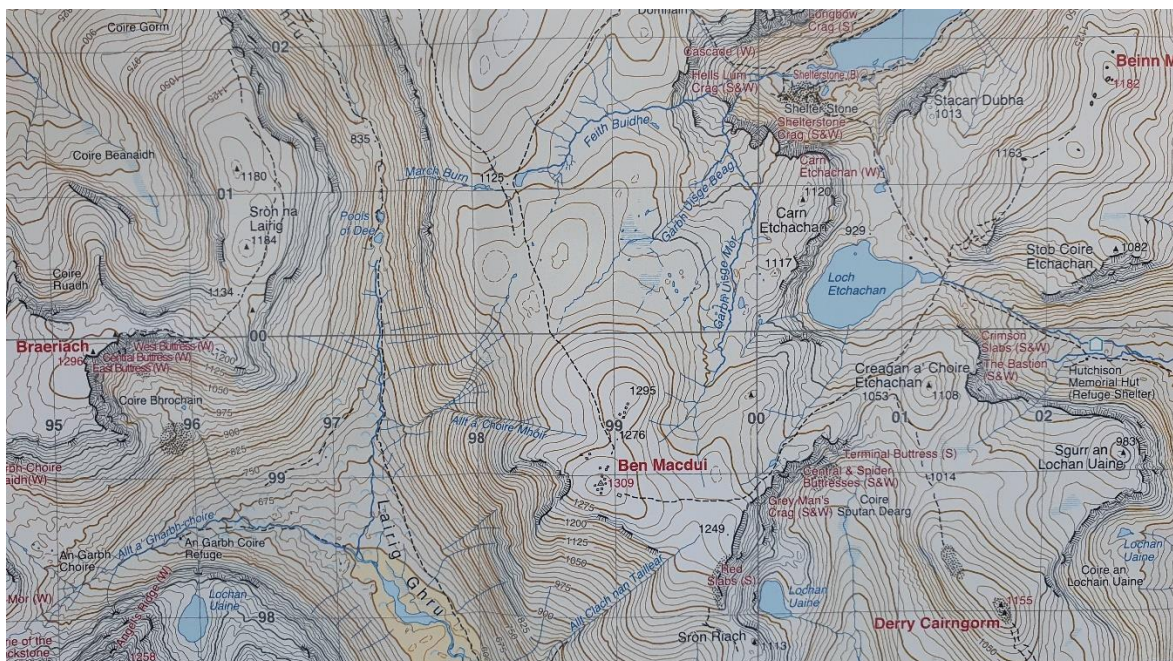
14. Using the map above, what spot feature is at grid reference 636,915

15. What important bit of information must you give emergency services when giving them a grid reference of your location?

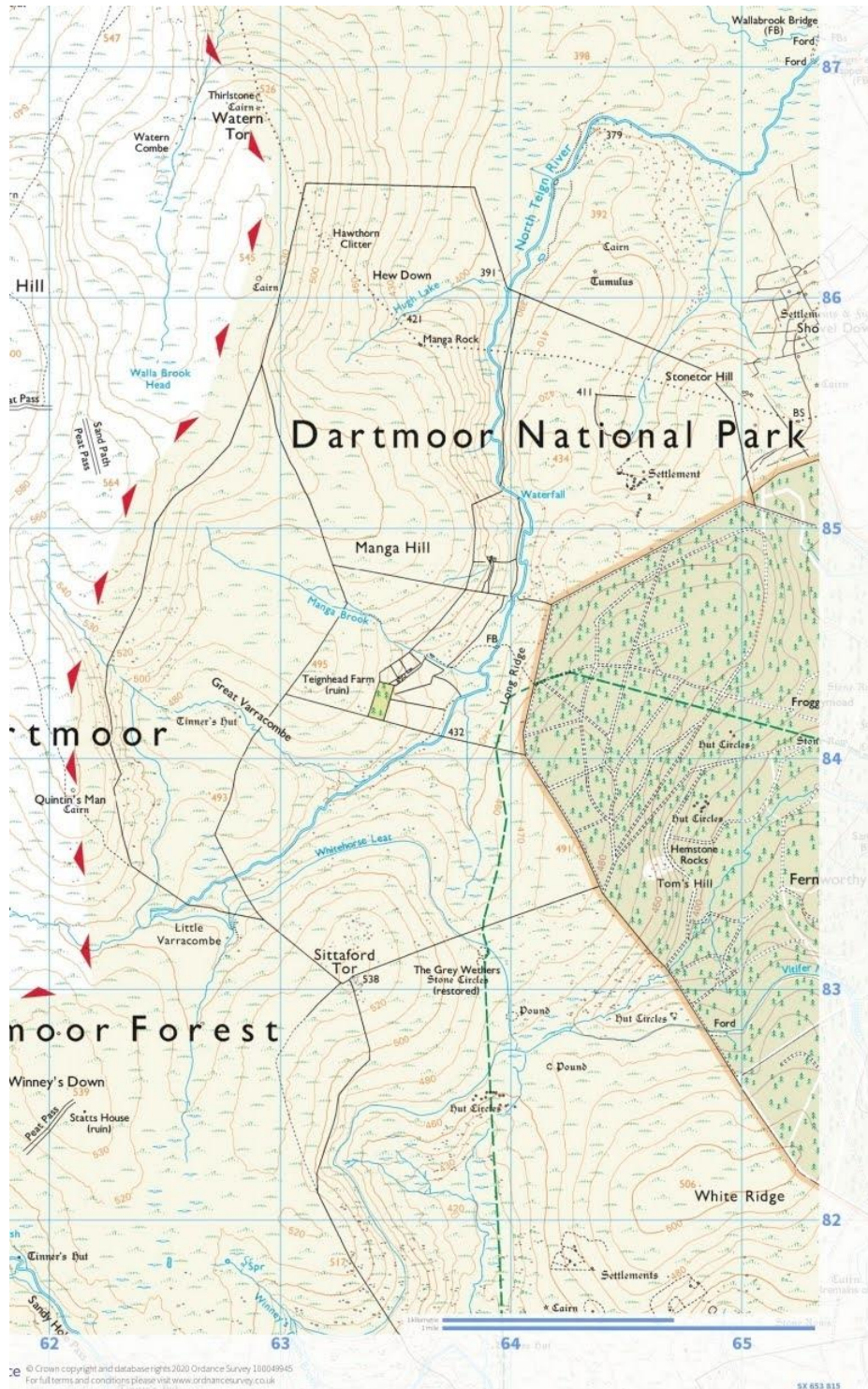
16. With the above question in mind, what grid reference would you give the emergency services for the summit of THE OLD MAN OF CONISTON in grid square 27,97 in the map below.



17. This is a hard one! Look at the map below, what is unique about this area? (hint: look at the grid numbers)

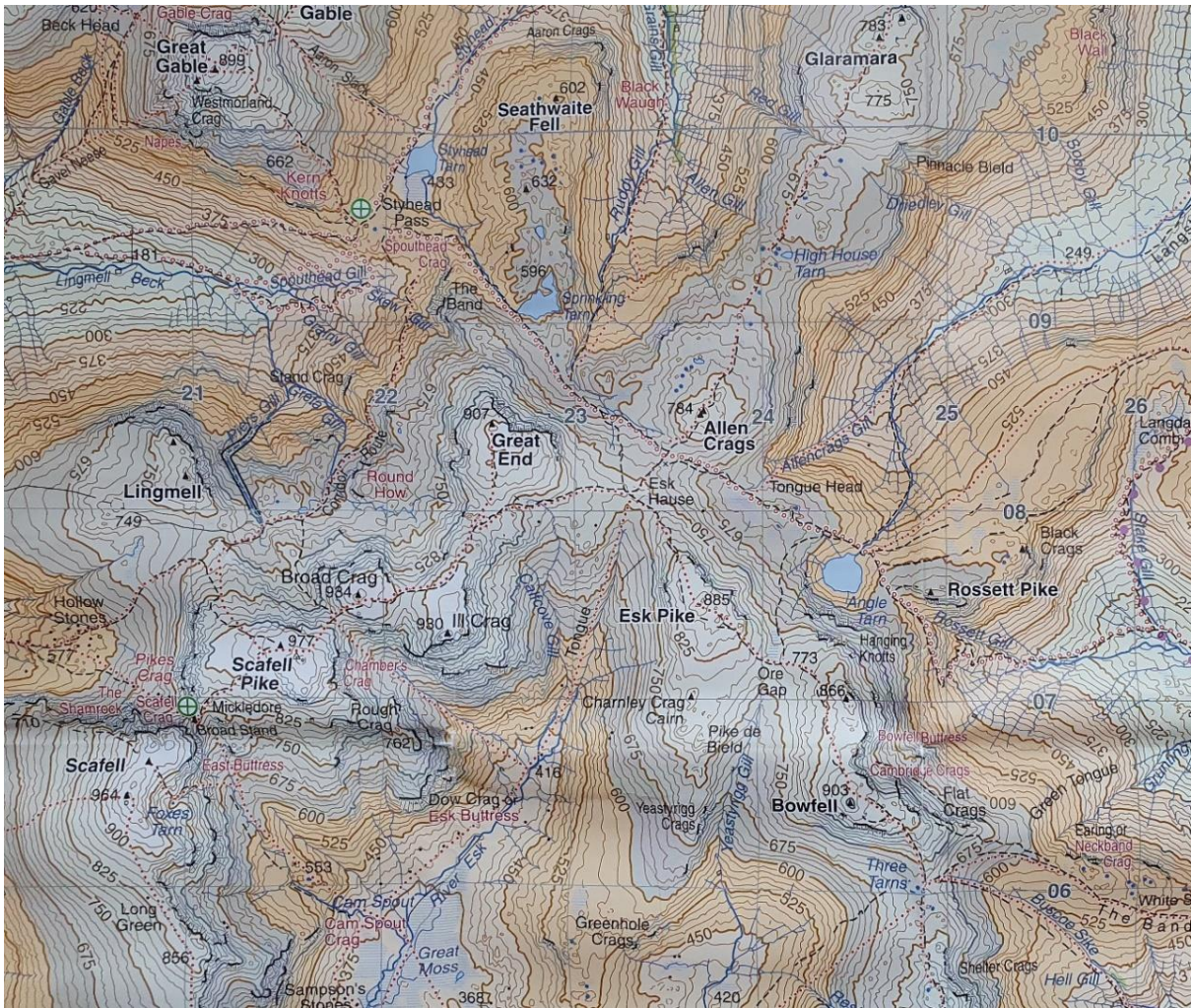


18. From grid reference 633,830 to grid reference 629,868 , what is the handrail we can use to help us navigate between them?

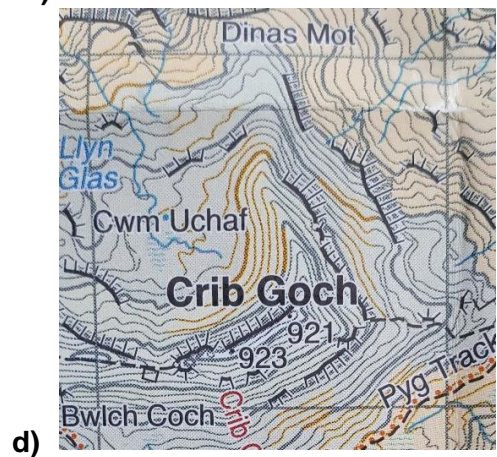
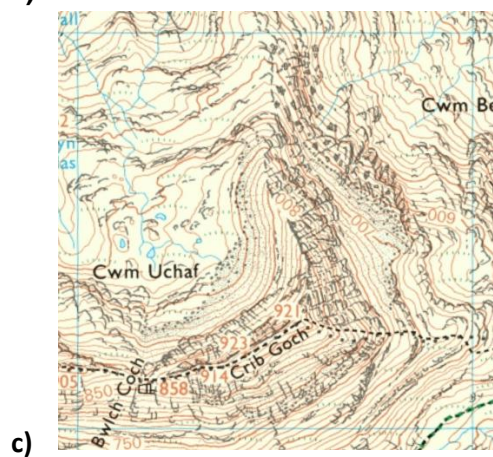
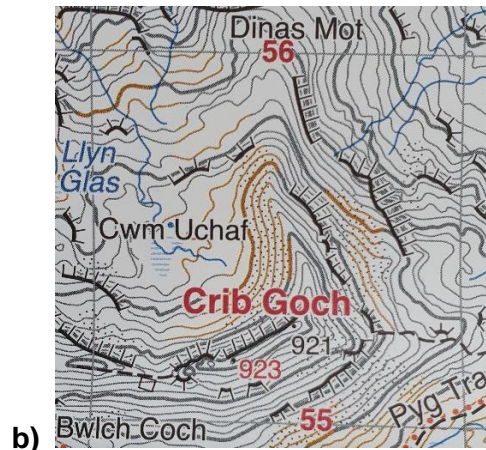
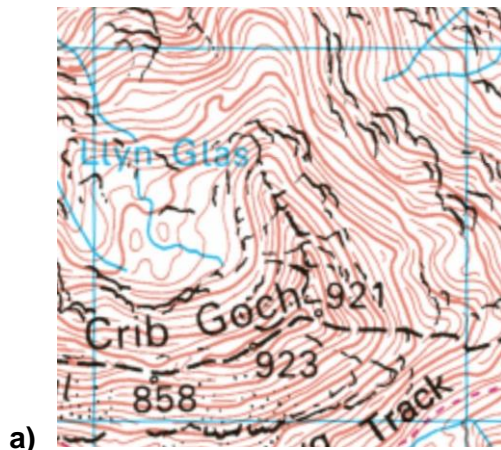


19. In the map below (next page) there are 2 MOUNTAIN RESCUE KIT locations.

- Firstly, Identify their SYMBOL.
- Secondly, what are the 6-figure grid references of their locations?



20. Looking at the detail of each grid square below, What are the Scale of the maps and who are the publishers? (Images not to actual scale)



21. Name three resources we can use to help us measure distance.

-
-
-

22. Name two ways we can help prolong the life of our maps.

-
-

23. Why should we NEVER rely on technology when navigating?

.....

24. If absolutely necessary, what would you use to write on a paper map?

.....

25. This question is to get you thinking! If you haven't got pacing beads, what other ideas can you think of to help you keep track of every 100 metres you have covered. (*keep it simple*)

.....
.....
.....

Blank answer Sheet:

1)

.....

- 2)
- **Image 1 Scale:**
 - **Image 2 Scale:**

- 3)
- | | |
|---------------------------------|--------------|
| a) Road Map | 1. 1:40,000 |
| b) Orienteering Map | 2. 1:100 |
| c) Harvey British Mountain Map | 3. 1:1,250 |
| d) Ordnance Survey Explorer Map | 4. 1:250,000 |
| e) Town Map | 5. 1:25,000 |
| f) Floor Plan of your Home | 6. 1:10,000 |

- 4)
-
 -
 -

- 5)
-
 -

- 6)
- a)
 - b)
 - c)

7) a)

b)

c)

8)

.....

.....

.....

9)

.....

.....

10)

.....

11)

12)

13)

14)

15)

16).....

17).....
.....

18).....

- 19)
-
 -

- 20)
- a)
 - b)
 - c)
 - d)

- 21).
-
 -
 -

- 22).
-
 -

23).....

24).....

25).....
.....